

# mine

[series adaptation]



***TAYLOR***





***ALEX CHEN***





A close-up portrait of Riley Chen, a young woman with long, wavy brown hair. She is looking directly at the camera with a neutral expression. Her right hand is resting against her cheek. She is wearing a yellow top and a small, round earring. The background is softly blurred, showing what appears to be an indoor setting with a window.

***RILEY CHEN***





***RACHEL***



***LAURA CHEN***





***JOSHUA***





***COOPER CHEN***







***GRANT***

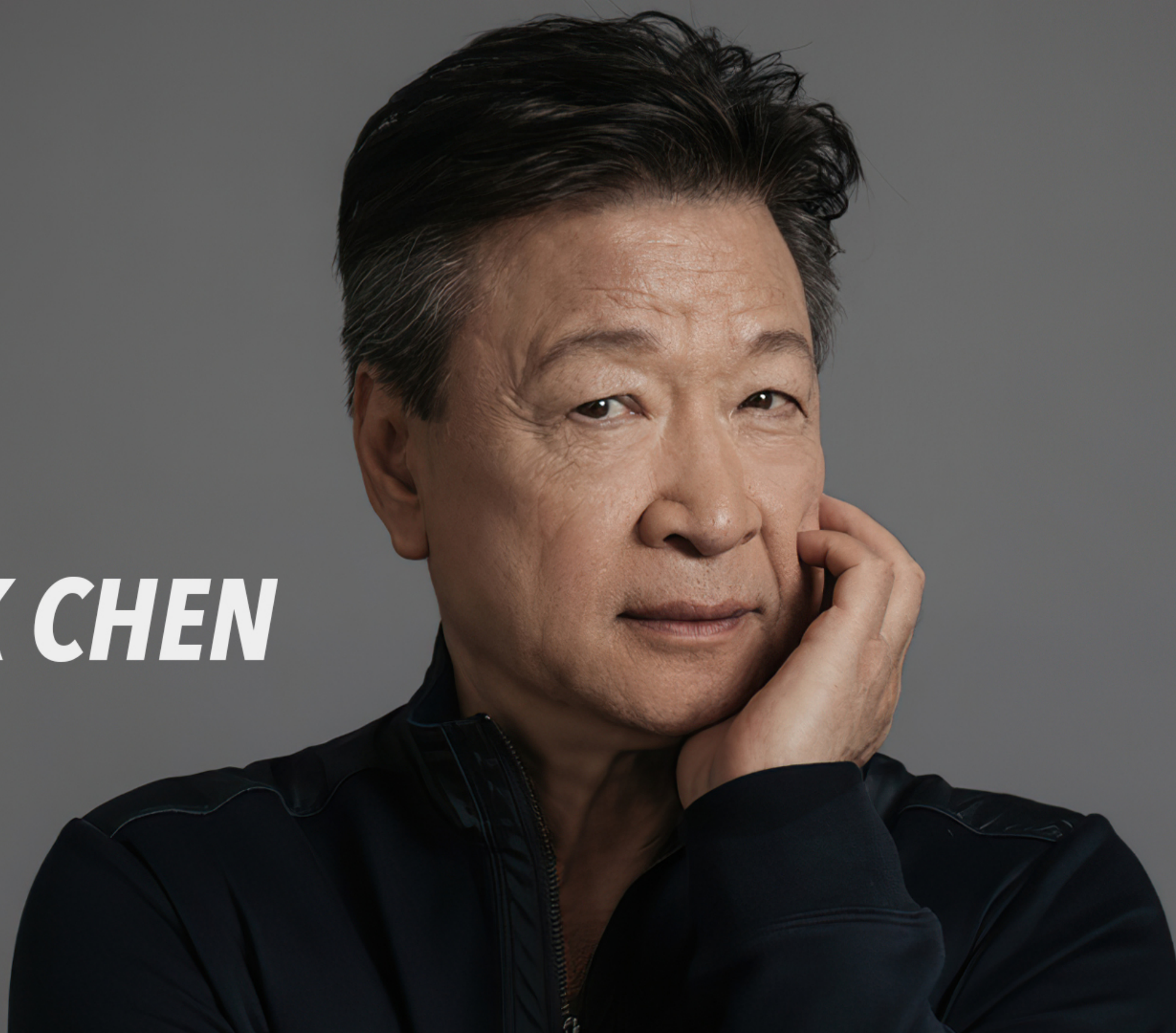


***ALISON CHEN***





***FRANK CHEN***







**CATHERINE CHEN**



***HUNTER CHEN***





A close-up portrait of Tracey Chen, a woman with long dark hair, wearing a black sweater. She is looking slightly to the left of the camera with a gentle smile. The background is softly blurred, showing what appears to be a hallway or office setting with warm lighting.

***TRACEY CHEN***



A close-up portrait of a woman with short, styled, light-colored hair. She has a calm, steady gaze directed slightly to the right of the camera. Her skin shows natural aging with subtle wrinkles around her eyes and forehead. She is wearing a dark blue denim jacket with visible stitching. The background is a plain, light grey color.

**ANGELA CHEN**





***PAUL SHANE***



# THE FAMILY

FRANK CHEN



TRACEY CHEN



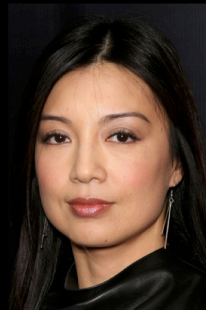
ANGELA CHEN



CATHERINE CHEN



LAURA CHEN



JOSHUA



COOPER



ALISON CHEN



ALEX CHEN



RILEY



JESSICA



HUNTER CHEN





# ***THE EMPLOYEES***

**RACHEL**  
*the maid*



**TAYLOR**  
*the manny*



**GRANT**  
*the assistant*



**PAUL SHANE**  
*the family lawyer*

